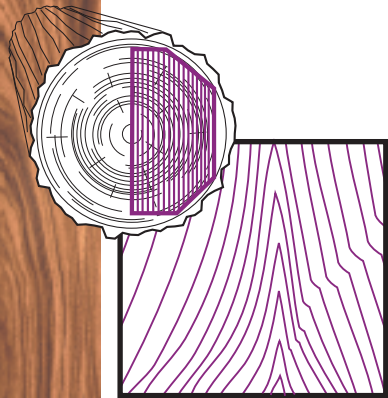


How a log is sliced will affect the appearance of the veneer face. The majority of SanFoot® Natural Wood Veneer Wallcovering is manufactured from veneers sliced by the four methods described below. Other slicing methods may be used for custom effects and unique appearances. Please consult with your representative for the availability of custom SanFoot® products.



Flat Cut (F.C.) Andes Rosewood

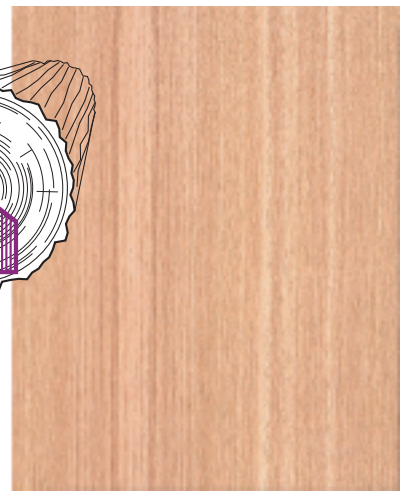
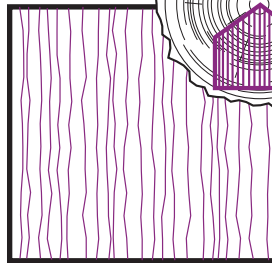


**Flat Cut (F.C.)
aka Plain Sliced**

A variegated figure typified by straight grain mixed with swirls and cathedrals. Also known as Plain Slicing.

Quarter Cut (Q.C.)

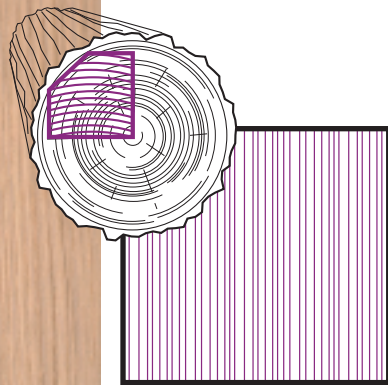
A consistent straight grain with parrallel ribbon-like figure.



Quarter Cut (Q.C.) Japanese Ash



Rift Cut White Oak

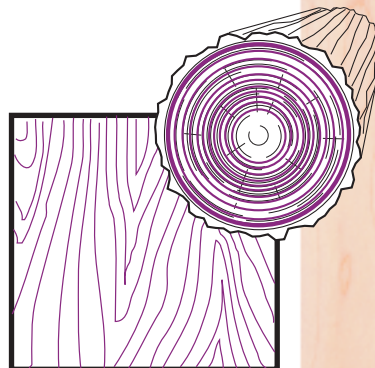


Rift Cut

A straight grain effect similar to true quarter cut veneer most commonly used when slicing varieties of Oaks.

**Rotary Cut
aka Half Round**

A bold, sometimes wild, variegated figure. Also known as Half-Round Cut.



Rotary Cut (R.C.) Maple

Please Note: Wood color and figure characteristics may vary among trees of the same species. Sequenced sheets from the same flitch will match. Different flitches may not match each other.

The appearance of SanFoot® Natural Wood Wall Covering is largely determined by how the veneer is sliced and then matched to form the full sheet. Illustrated below are some of the standard matching styles used with SanFoot®. Other matching and unique configurations are available. Please consult with your representative for the availability of custom SanFoot® products.

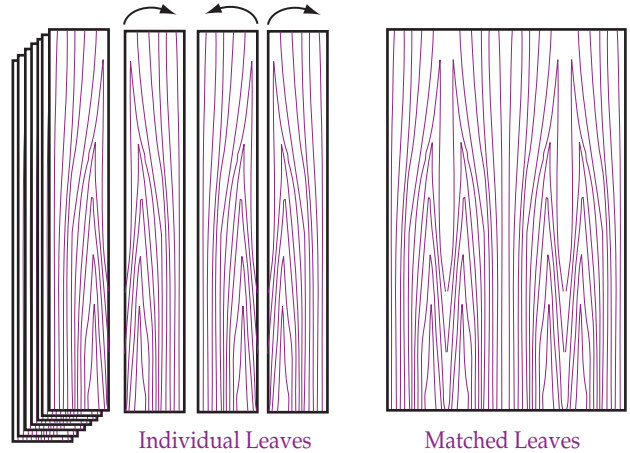
Face Matching: Book-Matched

Consecutive leaves of a veneer flitch have similar grain and figure. In book-matching alternate leaves are turned like the pages of a book. The vertical edges are then glued to make a "face." This duplication of pattern



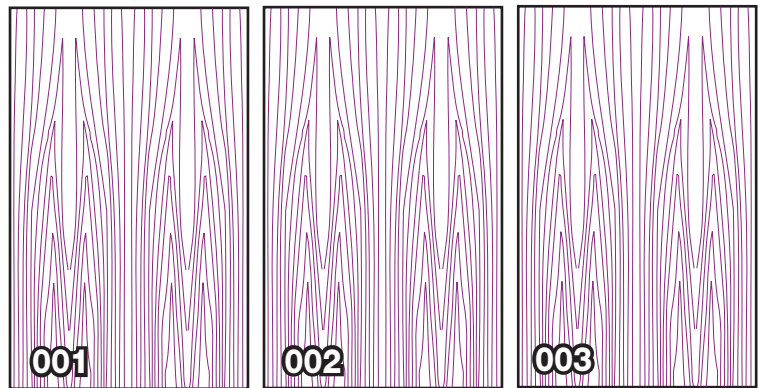
Bookmatched
Andes Rosewood, FC

permits a variety of visual styles. **Book-matched Faces** can be made from flat, quarter and rift-cut veneers.



Sequence Matched

These are sets of sheets manufactured from the same veneer flitch and sequentially numbered.



Sequence Matched
Sapele, QC

SanFoot Natural Wood Veneer Wallcovering is available as Bookmatched and Sequenced.

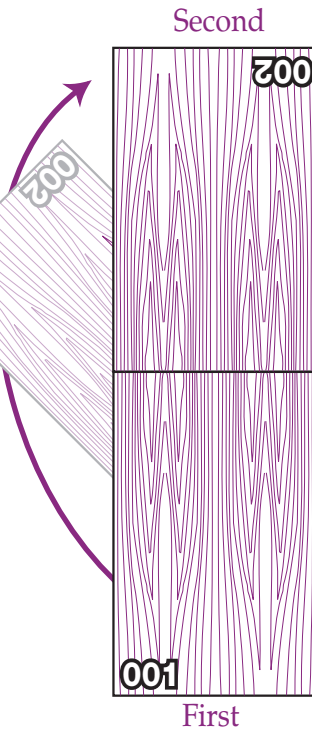
Note: All SanFoot sheets are oversized for table trimming and/or double cutting.

High walls and ceilings are easily accommodated with sequence matched SanFoot®

End Matched and Sequenced

Installations requiring lengths longer than standard sizes will require end matching of sequence sets. This offers the greatest possibilities to achieve continuity of color and figure. Sheets are installed sequentially with the first number in the lower left quadrant. The second is rotated 180 degrees and joined at the top of the first sheet. For best appearance when end matching sequenced sheets, mate numbered edge to numbered edge, or non-numbered edge to non-numbered edge, based on the desired result.

End Matching must be specified when ordering.

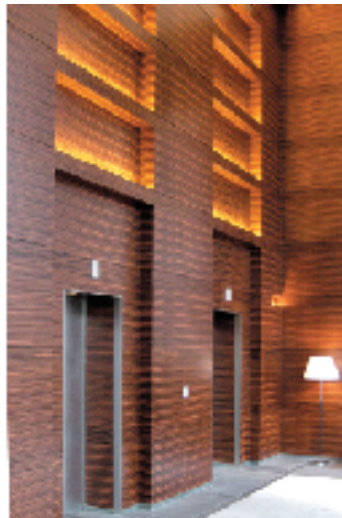


End Matched and Sequenced Cherry, FC

Patterns offer other unique and original possibilities with the large variety of versatile species colors, cuts and exotic figures.



Alternating Figure, Dimensionally Woven Japanese Ash, QC



Horizontal Installation, Ebony, FC



Diamond Matched Sapele, QC



Alternating Figure Orientation Ebony, QC



Stairstep Pattern Anigre, QC and Western Red Cedar, QC



Stripes and Checkerboard maple, QC and Ebony, QC

Creative applications can be further achieved through Custom color dyes, variable-gloss finishes, inlays, sketch faces and durable ink-jet surface printing



Pictorial Inlay
Ebony, FC, Maple, FC
and Camphorwood Burl

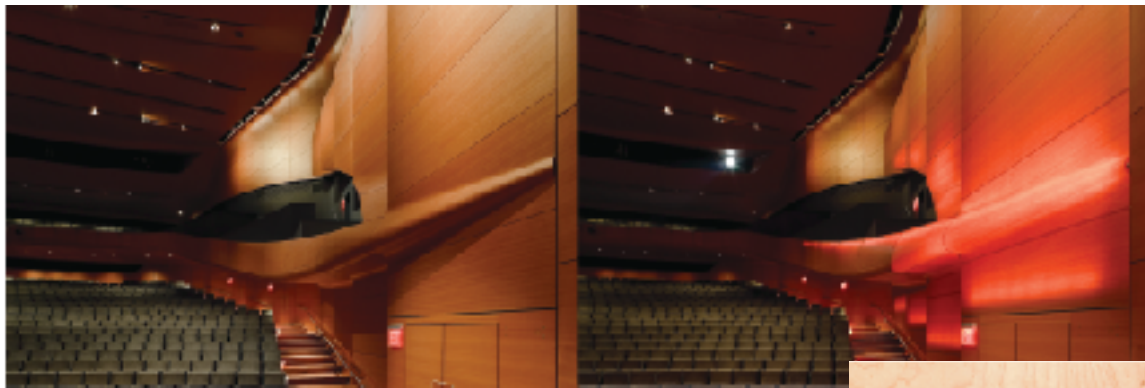


Starburst Panel
Tamo Ash



Full Color, Durable Inkjet Overprint
Maple, RC

SanFoot® TransTec bring the newest dimension to Natural Wood Veneer Wallcovering: Translucent panels lit from within.



Lincoln Center of Performing Arts, Alice Tully Hall,
Translucent Panels, Moabi, QC



Birdseye Maple, RC